



# COVID-19 VACCINATION IN MANITOBA

## TECHNICAL BRIEFING

February 17, 2021

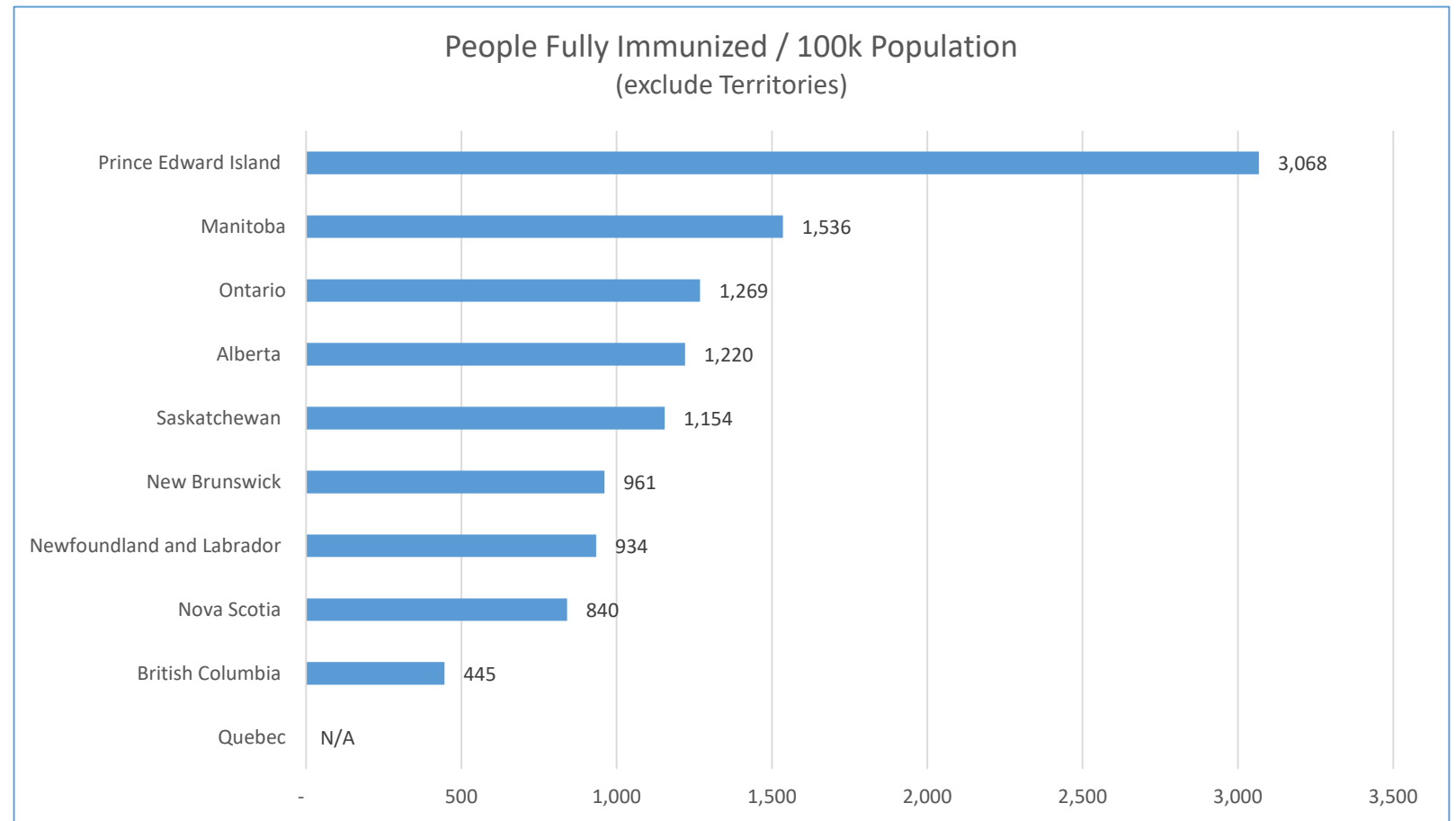


# COVID-19 VACCINATION IN MANITOBA OPERATIONAL UPDATES

# FOCUSED ON FULL PROTECTION: THE NATIONAL PICTURE



- Manitoba remains 2nd among provinces for total population fully immunized.
- This reflects the success of our plan.
- We only book 1st dose appointment when there is enough in-stock or an expected shipment for the 2nd dose to be injected within recommended timeframes



Data as of February 17, 2021 7:35am

# VACCINE DELIVERY MODEL UPDATES



## SUPERSITES

In larger centres, supersites allow for rapid and large-scale vaccination for increased speed and efficiency.

4

### Winnipeg

2,644

DOSES ADMINISTERED  
IN LAST WEEK

30,992

TOTAL DOSES  
ADMINISTERED

737

AVG. DAILY DOSES

55

EST. DAILY STAFF (FTE)

### Brandon

1,345

DOSES ADMINISTERED  
IN LAST WEEK

3,321

TOTAL DOSES  
ADMINISTERED

158

AVG. DAILY DOSES

27

EST. DAILY STAFF (FTE)

### Thompson

350

DOSES ADMINISTERED  
IN LAST WEEK

350

TOTAL DOSES  
ADMINISTERED

116

AVG. DAILY DOSES

14

EST. DAILY STAFF (FTE)

# VACCINE DELIVERY MODEL UPDATES



## FOCUSED IMMUNIZATION TEAMS (FITs)

FITs visit facilities to deliver vaccines where people live or congregate.

- FITs will visit 49 PCHs this week and administer about 3,600 second-doses to residents
- Second doses to be delivered to all PCHs before end of February.
- FITs will visit congregate living settings in Winnipeg and Brandon beginning February 19.

9,401  
TOTAL DOSES  
ADMINISTERED BY FITs

# CONGREGATE LIVING SETTINGS

Prioritizing the next phase of work by FITs



6

## Taking the Vaccine to Vulnerable Manitobans

- There are more than 1,400 congregate living sites with an estimated 22,782 residents in Manitoba
- The teams will start with the high priority congregate living settings which includes hospitals, supportive housing and assisted living sites.
- FITs provide immunizations to **residents only** at congregate living sites.
- Staff can attend fixed sites once they are eligible for vaccine. Criteria is being expanded to include some staff, beginning today.
- Sites with a small number of people may require an alternate approach. Assessments are being done on whether FITs or supporting residents to attend a clinic is the best option in some cases.

# CONGREGATE LIVING SETTINGS

Prioritizing the next phase of work by FITs



## Prioritization and Scheduling

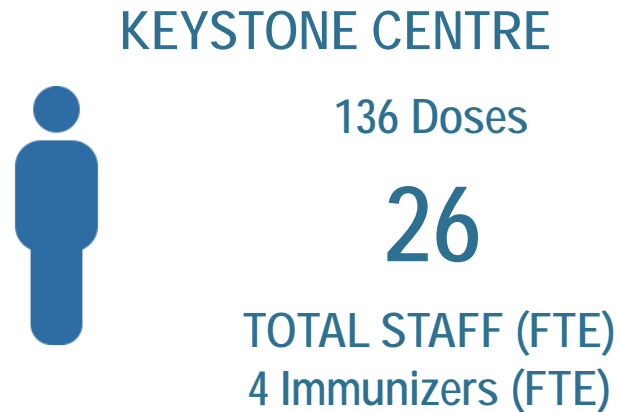
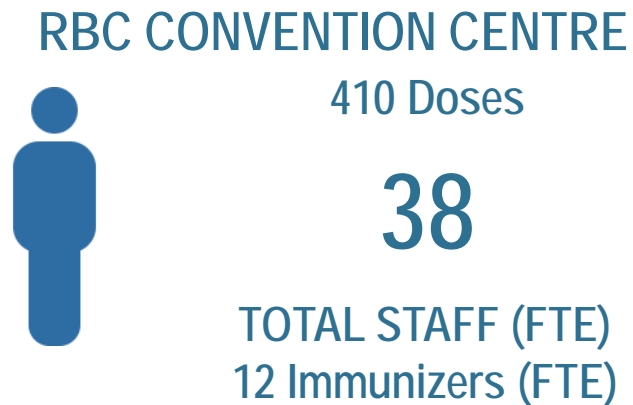
- Congregate living settings for immunization were reviewed and priorities in terms of the sequence of the schedule were developed based on the following criteria:
  - age
  - health status
  - ability to follow public health guidance
- Immunizations will begin in Winnipeg and Brandon (due to vaccine supply) on Feb. 19 with highest priority sites first
- Manitoba is releasing a list of all congregate living sites and our initial schedule. More information will follow.

# WORKFORCE RECRUITMENT



## DAILY OPERATIONAL SCHEDULE

Overall, staffing is down due to lack of vaccine



## CURRENT WORKFORCE



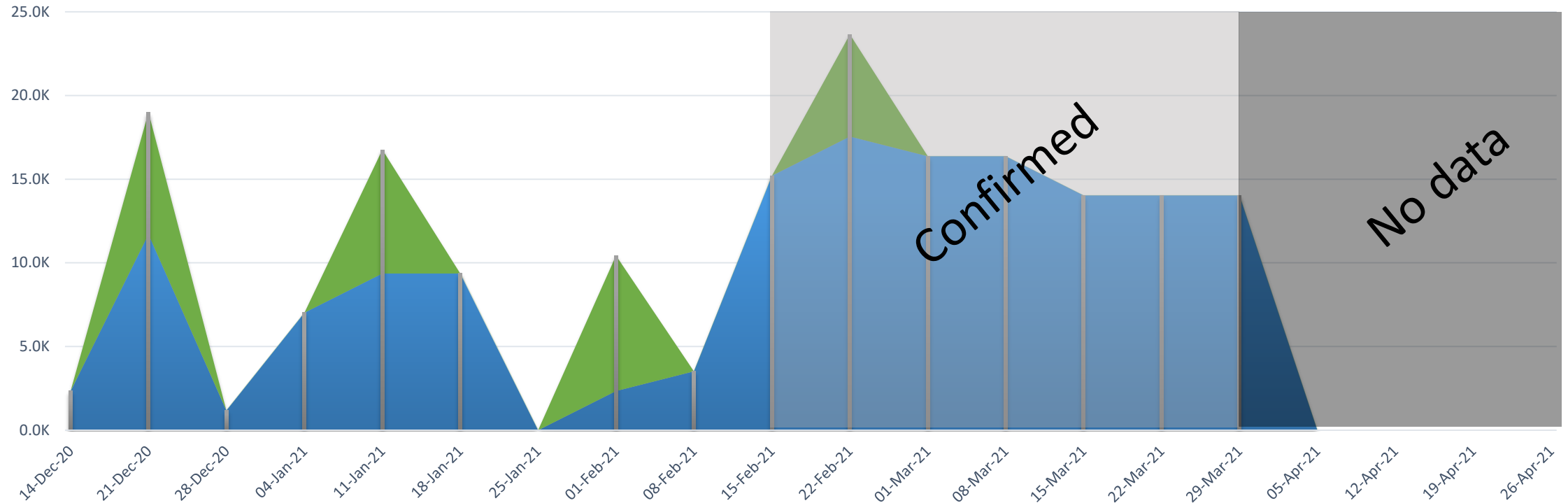
- 1,528 immunizers
- 13 clinic managers
- 21 clinical leads
- 376 navigators
- 102 observers



# COVID-19 DOSE DELIVERY SCHEDULE



Doses Received & Projected



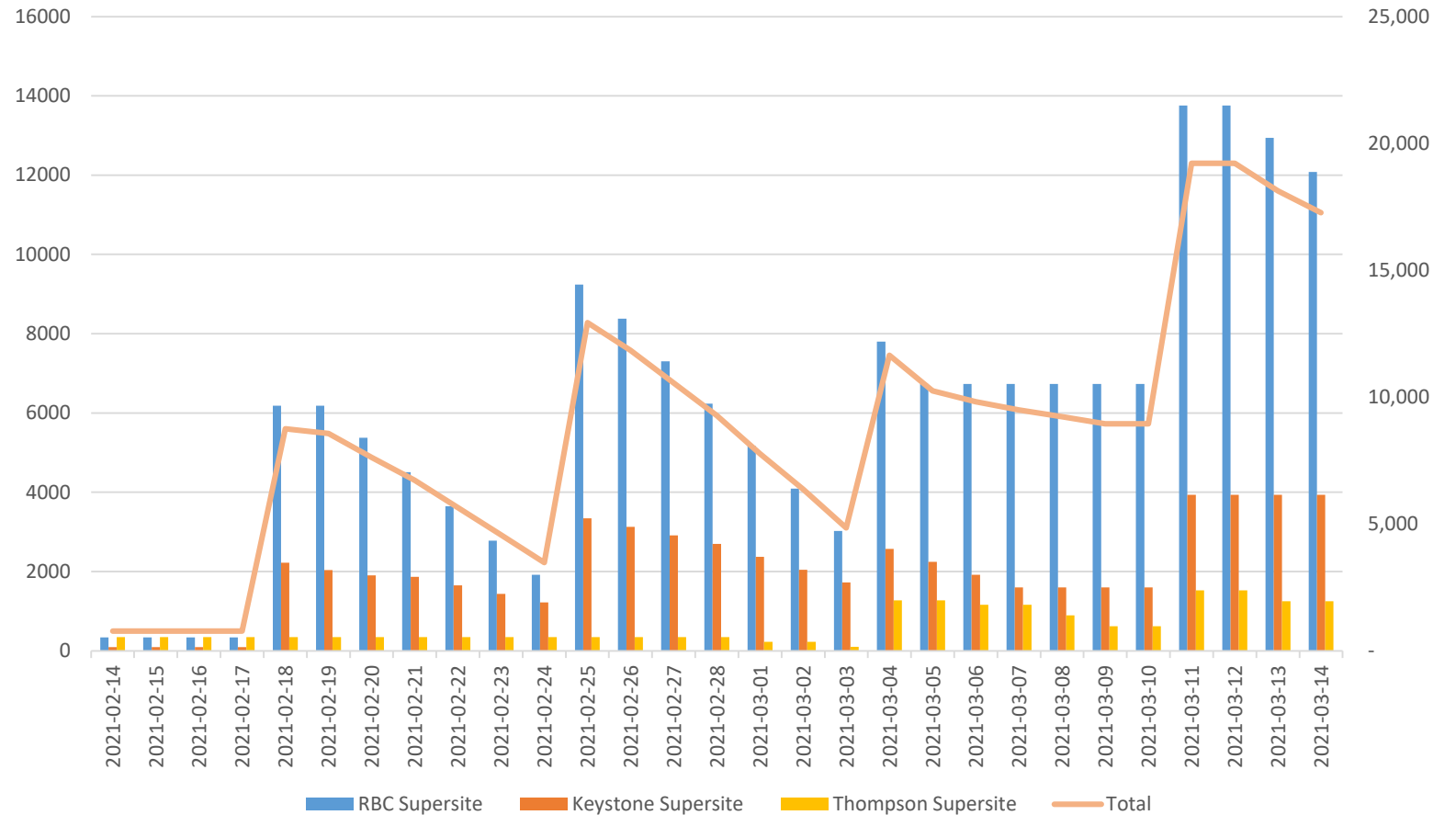
	14-Dec-20	21-Dec-20	28-Dec-20	04-Jan-21	11-Jan-21	18-Jan-21	25-Jan-21	01-Feb-21	08-Feb-21	15-Feb-21	22-Feb-21	01-Mar-21	08-Mar-21	15-Mar-21	22-Mar-21	29-Mar-21	05-Apr-21	12-Apr-21	19-Apr-21	26-Apr-21	
■ Moderna Doses	0.0K	7.3K	0.0K	0.0K	7.4K	0.0K	0.0K	8.1K	0.0K	0.0K	6.1K	0.0K	0.0K	0.0K	0.0K	0.0K	0.0K	0.0K	0.0K	0.0K	0.0K
■ Pfizer Doses	2.3K	11.7K	1.2K	7.0K	9.4K	9.4K	0.0K	2.3K	3.5K	15.2K	17.6K	16.4K	16.4K	14.0K	14.0K	14.0K	0.0K	0.0K	0.0K	0.0K	
■ Total	2.3K	19.0K	1.2K	7.0K	16.8K	9.4K	0.0K	10.4K	3.5K	15.2K	23.7K	16.4K	16.4K	14.0K	14.0K	14.0K	0.0K	0.0K	0.0K	0.0K	

# SUPERSITE INVENTORY MANAGEMENT

Projected for the next 30 days



### Closing Stock Balance - Supersites



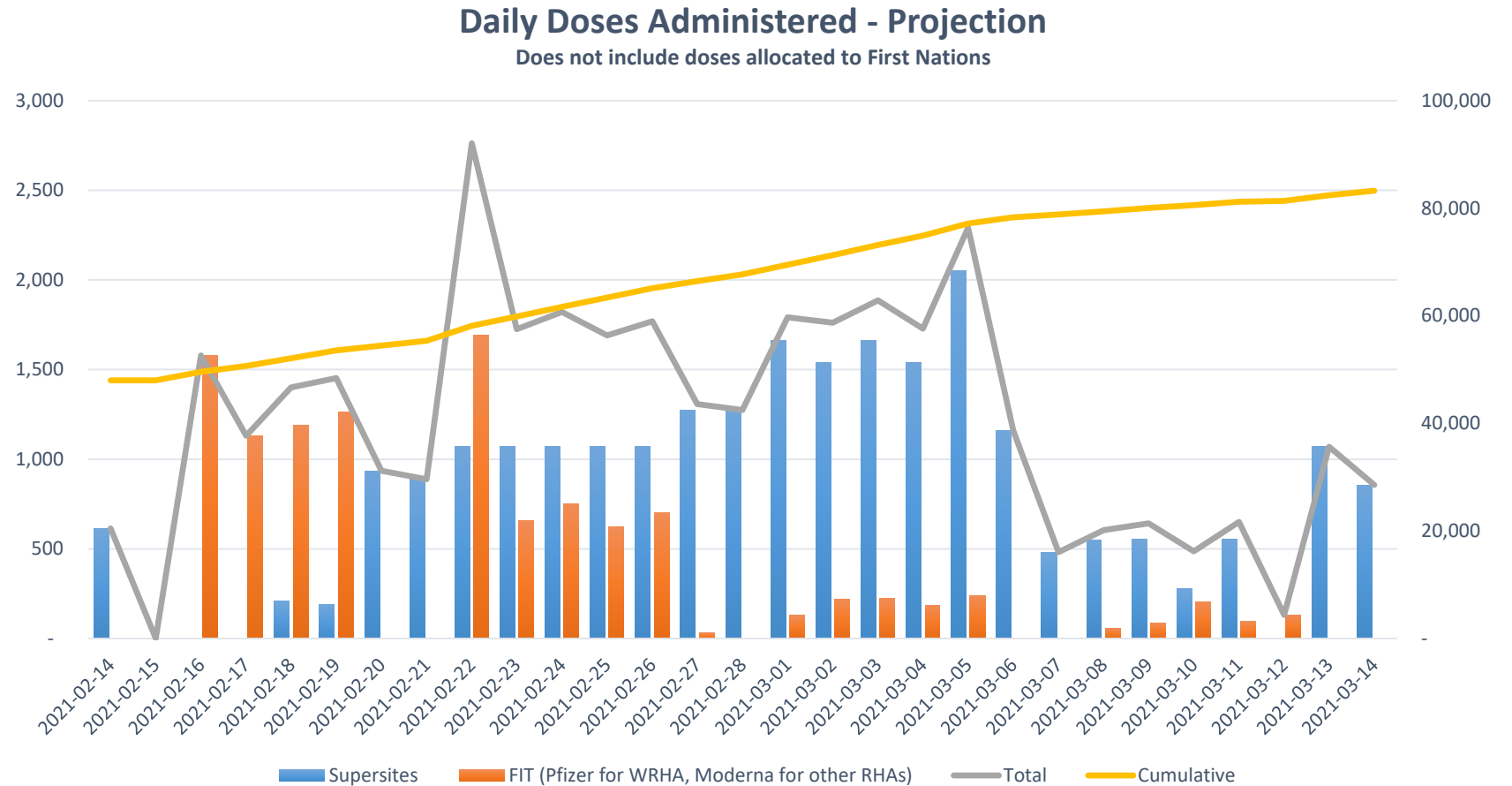
Projections as of February 16, 2021. Each rise in doses represents a scheduled delivery.

# DOSE ADMINISTRATION PROJECTION



- Based on current supply projections, we estimate an average of 1,157 injections per day in February, subject to current vaccine supply forecasts.

\* Note: Daily injections lower than last week due to supply-based delays in congregate living sites



Projected as of February 16

# LOW-RANGE SCENARIO



Based on currently-approved Pfizer and Moderna vaccines

Cohort	Population Cohort	Start	Finish	Duration	2021											
					Jan	Feb	Mar	Apr	May	Jun	Jul	Aug	Sep	Oct	Nov	Dec
1	Healthcare Workers	16-Dec-2020	30-Jul-2021	32.6w	[Orange bar spanning Dec 2020 to Jul 2021]											
2	Personal Care Home Residents	11-Jan-2021	12-Mar-2021	9w	[Orange bar spanning Jan to Mar 2021]											
3	Other congregate living settings	19-Feb-2021	30-Apr-2021	10.2w	[Orange bar spanning Feb to Apr 2021]											
4	FN general population 60+	15-Mar-2021	14-May-2021	9w	[Orange bar spanning Mar to May 2021]											
5	General population 80+	15-Mar-2021	14-May-2021	9w	[Orange bar spanning Mar to May 2021]											
6	FN general population 50-59	01-Apr-2021	28-May-2021	8.4w	[Orange bar spanning Apr to May 2021]											
7	General population 70-79	01-Apr-2021	28-May-2021	8.4w	[Orange bar spanning Apr to May 2021]											
8	FN general population 40-49	03-May-2021	29-Jun-2021	8.4w	[Orange bar spanning May to Jun 2021]											
9	General population 60-69	03-May-2021	29-Jun-2021	8.4w	[Orange bar spanning May to Jun 2021]											
10	FN general population 30-39	01-Jun-2021	29-Jul-2021	8.6w	[Orange bar spanning Jun to Jul 2021]											
11	General population 50-59	01-Jun-2021	29-Jul-2021	8.6w	[Orange bar spanning Jun to Jul 2021]											
12	FN general population 18-29	02-Aug-2021	30-Sep-2021	8.8w	[Orange bar spanning Aug to Sep 2021]											
13	General population 40-49	02-Aug-2021	30-Sep-2021	8.8w	[Orange bar spanning Aug to Sep 2021]											
14	General population 30-39	03-Sep-2021	29-Oct-2021	8.2w	[Orange bar spanning Sep to Oct 2021]											
15	General population 18-29	01-Oct-2021	30-Nov-2021	8.6w	[Orange bar spanning Oct to Nov 2021]											

# HIGH-RANGE SCENARIO



Based on Pfizer, Moderna and other vaccines that have not yet been approved

Cohort	Population Cohort	Start	Finish	Duration	2021													
					Jan	Feb	Mar	Apr	May	Jun	Jul	Aug	Sep	Oct	Nov	Dec		
1	Healthcare Workers	16-Dec-2020	28-May-2021	23.6w	█													
2	Personal Care Home Residents	11-Jan-2021	12-Mar-2021	9w	█													
3	Other congregate living settings	19-Feb-2021	28-Apr-2021	9.8w		█												
4	FN general population 60+	15-Mar-2021	14-May-2021	9w			█											
5	General population 80+	15-Mar-2021	14-May-2021	9w			█											
6	FN general population 50-59	01-Apr-2021	31-May-2021	8.6w			█											
7	General population 70-79	01-Apr-2021	31-May-2021	8.6w			█											
8	FN general population 40-49	15-Apr-2021	31-May-2021	6.6w			█											
9	General population 60-69	15-Apr-2021	31-May-2021	6.6w			█											
10	FN general population 30-39	03-May-2021	30-Jun-2021	8.6w				█										
11	General population 50-59	03-May-2021	30-Jun-2021	8.6w				█										
12	FN general population 18-29	01-Jun-2021	30-Jul-2021	8.8w					█									
13	General population 40-49	01-Jun-2021	30-Jul-2021	8.8w					█									
14	General population 30-39	01-Jul-2021	31-Aug-2021	8.8w						█								
15	General population 18-29	15-Jul-2021	31-Aug-2021	6.8w							█							



DELIVERING 1.5 MILLION DOSES  
Ramping up for the 2nd quarter

# SECOND QUARTER EXPANSION

Building from Manitoba's small, deliberate and safe starting point to deliver the largest immunization campaign in provincial history



- Manitoba now reports **Daily Maximum Capacity**
- This shows how many doses could be delivered on any given day in Manitoba if we had adequate supply.
- This will be updated as new facilities and staff are added to increase capacity.

Site / Approach	Daily Maximum Capacity
Supersites (RBC, Backup Site, Keystone, Thompson, Vaxport)	6,499
Distributed Model (Medical clinics and pharmacies)	2,620
Focused Immunization Teams	500
Pop-up Clinics	500
<b>Current Daily Maximum Capacity</b>	<b>10,199</b>
<b>TARGET CAPACITY Q2</b>	<b>20,000</b>

# DISTRIBUTED MODEL

Providing immunizations through  
medical clinics and pharmacies



## Goals of the Distributed Model

- The distributed model will be:
  - safe and effective
  - scalable
  - flexible to administer new vaccines
  - broad geographic reach
  - offer immunizations in a familiar setting
- To meet Q2 expansion plans, Manitoba expects to register hundreds of medical clinics and pharmacies



# DISTRIBUTED MODEL

Providing immunizations through medical clinics and pharmacies



## Building Immunization Capacity

- We expected the distributed model will provide one-quarter of our Q2 capacity (5,000 of 20,000 doses / day)
- There are 850 sites in Manitoba, so we are estimating 30% participation rate
- To reach our goal with this uptake, each clinic/pharmacy would have to administer only 20 doses / day
- To date: 131 medical clinics/pharmacies registered
- This represents 2,620 doses/day (131 x 20 = 2,620) -- or 52% of our Q2 goal

# SUPERSITES



## Role of Supersites in Immunization

- Dual function: administering vaccines and distribution hub for Focused Immunization Teams and pop-up / mobile clinics
- Highly effective and efficient
- Currently in Winnipeg, Brandon, Thompson and Vaxport
- To meet Q2 expansion plans, Manitoba expects to open up to 13 supersites

# SUPERSITES



## Selection Criteria for Supersites

- Population density: Maximize how many people can reasonably get to the site for immunization
- Geographical location: Must be able to serve as a distribution hub for the region and be accessible to staff and clients
- Other key considerations:
  - ability to hold fridges / freezers needed for vaccine storage
  - available space, to allow for social distancing by staff and clients
- separate entrances and exits
- accessibility
- parking or access by public transit, where available
- telecommunications access, including wi-fi for real-time data entry

# SUPERSITES

## Two New Supersites to Launch in March

- As part of Manitoba's plan, supersites will be located in Selkirk (Interlake Eastern Regional Health Authority) and Morden / Winkler (Southern Health – Santé Sud)
- Opening date: first week of March (expected, based on vaccine supply)
- Exact locations to be released as soon as possible.
- This means supersites will be located in every RHA



# PROCUREMENT

## From Supersites to Syringes...

- Manitoba's immunization campaign must procure everything it needs for distribution and storage – freezers, needles, swabs, etc – when the rest of the world is doing the same thing
- 145 different kinds of supplies have been ordered, costing millions of dollars
- Manitoba has also procured its own vaccine with a Canadian vendor, currently in clinical trials



# PROCUREMENT



## Specialized Equipment

- Over 400 shipping containers procured, to transport different vaccines:
  - -80C with dry ice and data logging
  - -20C with thermal trackers
  - 2 to 8C with gel and ice packs
- 200 specialized freezers and fridges procured, installed and alarmed at sites across Manitoba
- Partnered with Shared Health to procure more than 80,000 1 mL syringes ahead of an expected worldwide shortage
  - Has helped Manitoba to consistently get 6 doses of Pfizer from each vial, extending the amount of vaccine available to save lives by as much as 7,800 doses

# DISTRIBUTION



## Getting the Vaccine to Manitobans

- Tracking shipments from production sites to Manitoba, from locations around the world
- Have received 19 vaccine shipments to date
- To get these vaccines to Manitobans, we've made 249 vaccine shipments:
  - 11 to supersites
  - 56 to personal care homes in Winnipeg
  - 182 to rural locations, including personal care homes and First Nations
- Have to ensure the integrity and safety of the vaccine, every step of the way

# DISTRIBUTION

## Getting the Vaccine to Manitobans

- Planning to ship vaccine to as many as 1,200 physician and pharmacist sites once a suitable vaccine is approved for this model
- Use GIS mapping to transport to communities as effectively as possible
- To deliver more vaccine in Q2, moving to a 24-7 schedule, hiring another 32 staff





# SECURITY

## Keeping High-value Vaccine Safe

- Currently track deliveries from multiple locations in Europe to 4 destinations in Manitoba
- Established security protocols for all sites where vaccine is stored or transported
- Provide security escorts for vaccine deliveries as needed
- Regular communication with national security intelligence network, including CSIS, RCMP and others





# COVID-19 VACCINATION IN MANITOBA QUESTIONS?

Media are invited to provide feedback on future tech briefings or  
specific areas of interest to [lenore.kowalchuk@gov.mb.ca](mailto:lenore.kowalchuk@gov.mb.ca)